

CURVE DATA FOR NORTH AND SOUTH SECTIONS ONLY

CURVE NO. 1 Δ = 2° 51' 46" R = 400' T = 10' L = 19.93'	CURVE NO. 2 Δ = 11° 18' 36" R = 100.39' T = 10' L = 19.93'	CURVE NO. 3 Δ = 14° 10' 22" R = 80.42' T = 10' L = 13.89'
CURVE NO. 4 Δ = 10° 12' 14" R = 112.01' T = 10' L = 19.94'	CURVE NO. 5 Δ = 13° 04' 00" R = 87.32' T = 10' L = 19.91'	CURVE NO. 7 Δ = 5° 16' 04" R = 217.39' T = 10' L = 19.98'

INTERSECTION MODIFICATION AT 21ST STREET AND LEWIS AVENUE

TC - 65-1-5 (105-005)

CITY OF TULSA, OKLAHOMA

ENGINEERING DEPARTMENT
ENGINEERING DIVISION

REVISION	BY	DATE	DESCRIPTION
1	PAUL W. TULLIS	10-1-65	DESIGN
2	PAUL W. TULLIS	10-1-65	CONSTRUCTION

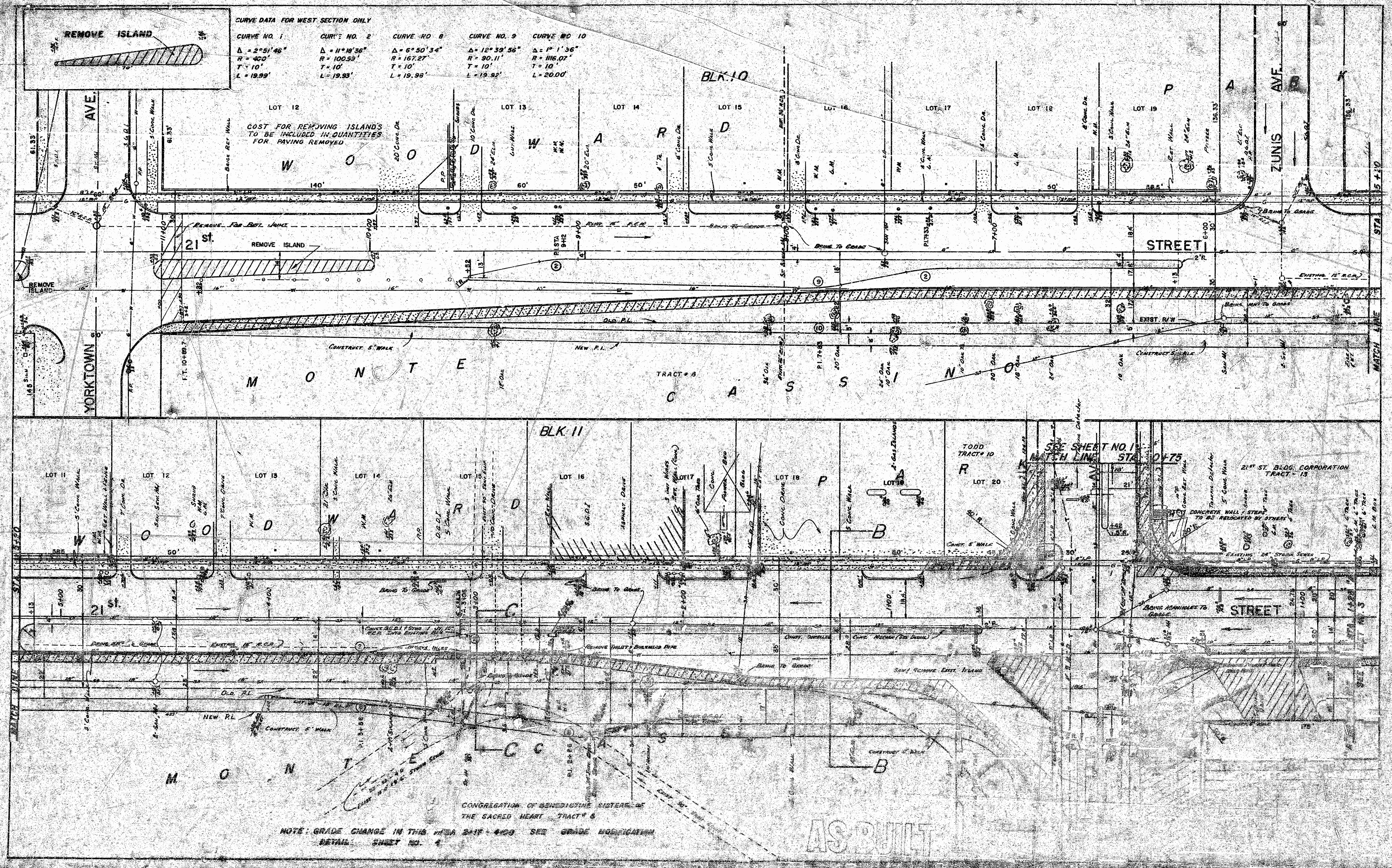
PAUL W. TULLIS



CURVE DATA FOR WEST SECTION ONLY

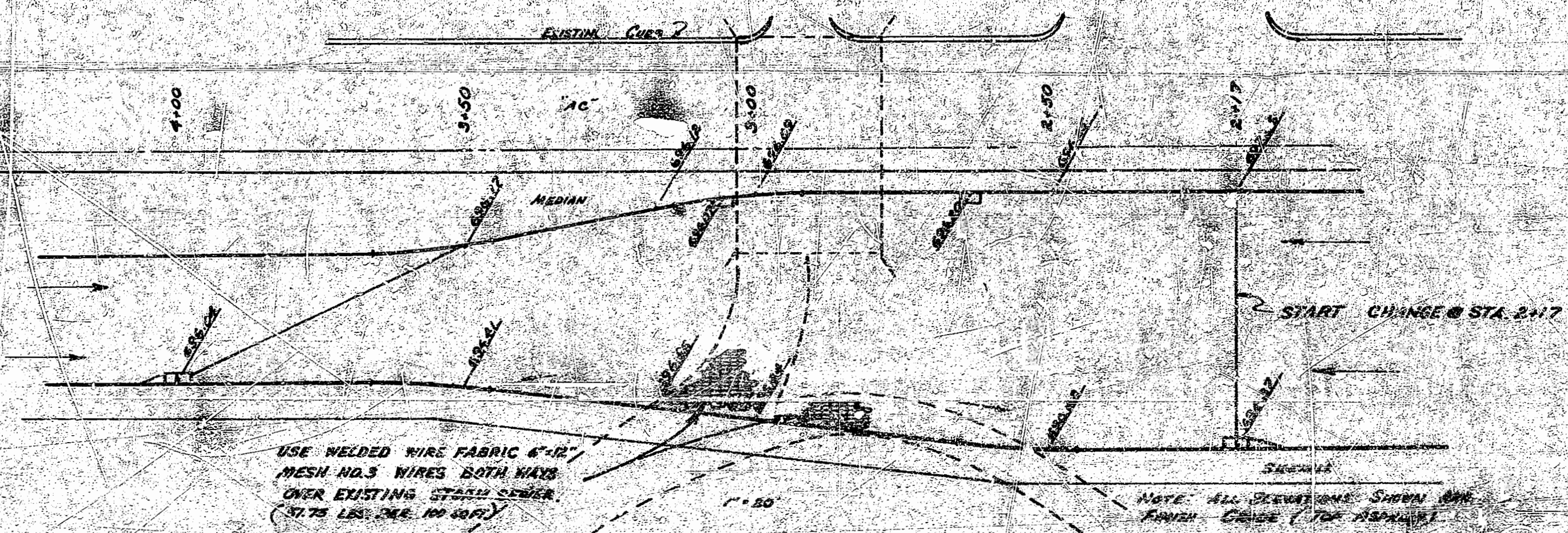
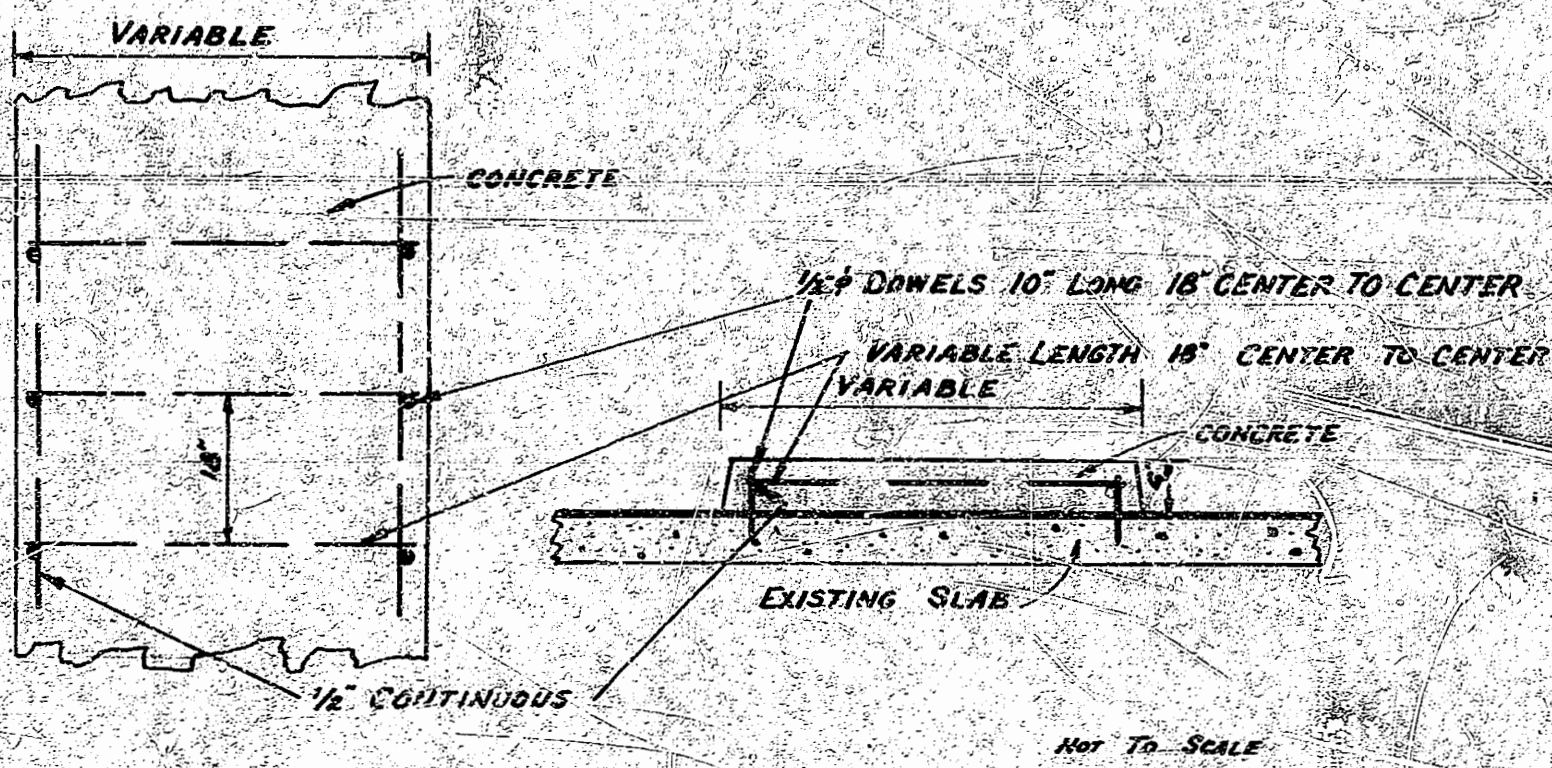
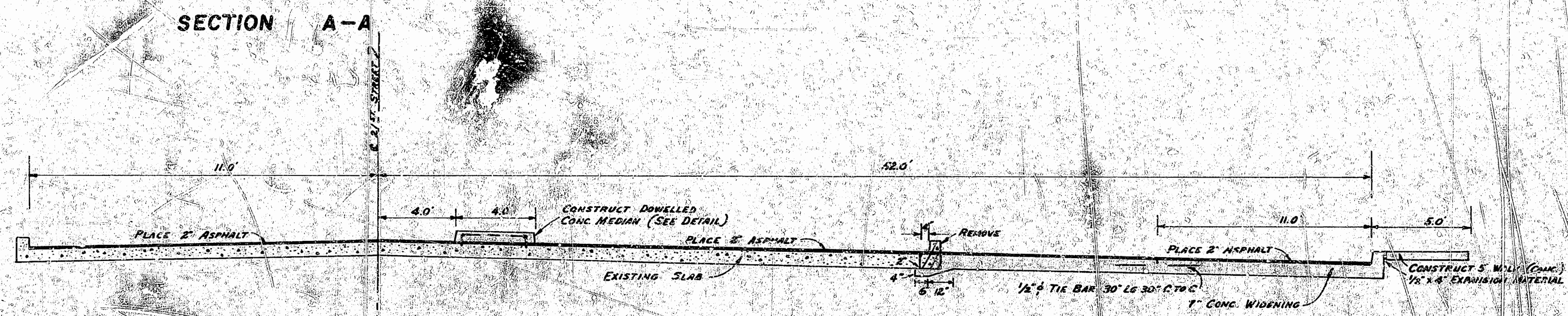
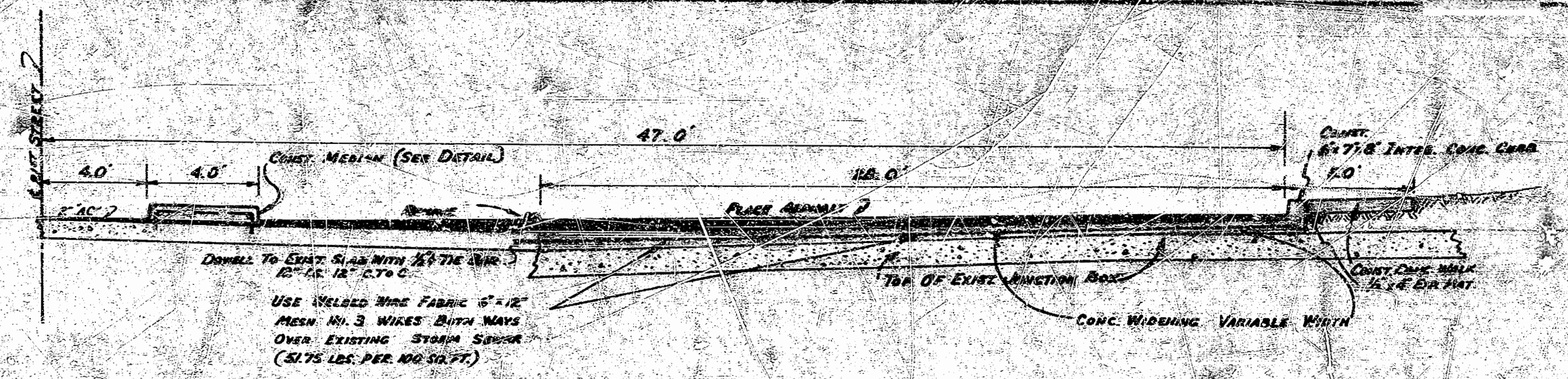
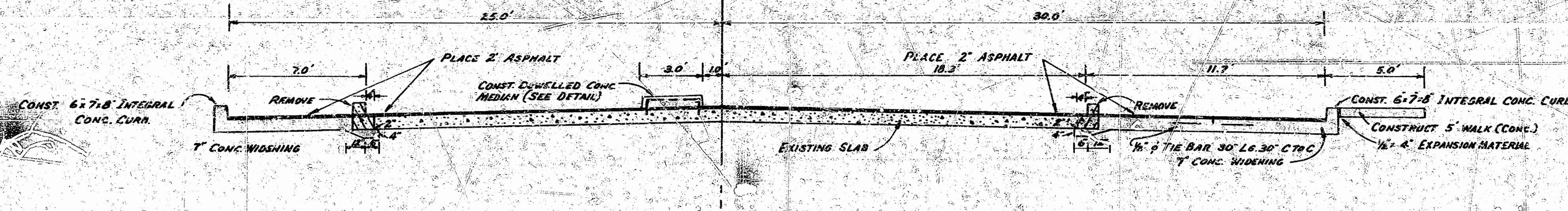
CURVE NO. 1	CURVE NO. 2	CURVE NO. 8	CURVE NO. 9	CURVE NO. 10
$\Delta = 2^\circ 51' 46''$ $R = 400'$ $T = 10'$ $L = 19.99'$	$\Delta = 11^\circ 19' 36''$ $R = 100.53'$ $T = 10'$ $L = 19.93'$	$\Delta = 6^\circ 50' 34''$ $R = 167.27'$ $T = 10'$ $L = 19.98'$	$\Delta = 12^\circ 39' 56''$ $R = 90.11'$ $T = 10'$ $L = 19.92'$	$\Delta = 1^\circ 1' 36''$ $R = 116.07'$ $T = 10'$ $L = 20.00'$

COST FOR REMOVING ISLANDS
TO BE INCLUDED IN QUANTITIES
FOR PAVING REMOVED



NOTE: GRADE CHANGE IN THIS AREA SAID 4-00 SEE GRADE MODIFICATION
DETAIL SHEET NO. 4

AS BUILT



NOTES

1. REMOVAL OF ALL TREES AND CONSTRUCTION OF BULKHEADS TO BE INCLUDED IN UNIT PRICE BID FOR UNCLASSIFIED EXCAVATION FOR PAVING.
2. REMOVAL OF HANDRAIL, RETAINING WALLS AND TOP OF HEADWALL ON LEWIS AVE. SOUTH OF INTERSECTION TO BE INCLUDED IN UNIT PRICE BID FOR UNCLASSIFIED EXCAVATION FOR PAVING.
3. ALL VALVES AND METERS BROUGHT TO GRADE TO BE INCLUDED IN QUANTITIES FOR ASPHALTIC CONCRETE.

AS BUILT

TC 63-1-5 (108-005)	
CITY OF TULSA, OKLAHOMA	
ENGINEERING DEPARTMENT	
ENGINEERING DIVISION	
DESIGNED	JSE
SURVEY	SEA
FIELD ENGINEER	W/O
OFFICE ENGINEER	W/O
DRAWN	W/O
CHECKED	W/O
APPROVED	W/O
PAUL W. GULLEY	
96	